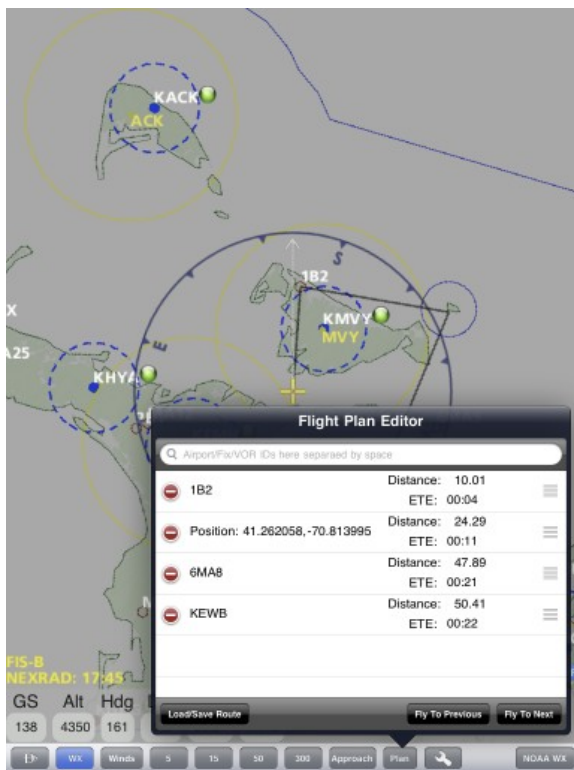


SkyRadar Application is aimed to provide a robust assistance to a GA pilot on the ground, during and after the flight. From flight planning to navigation, to real-time weather to one-click-and-scroll charts, to increased traffic awareness and much more, SkyRadar Application makes it all available at GA pilots' fingertips. With minimal number of clicks or taps and with all basic functions directly accessible, SkyRadar Application provides its assistance in an easy to use fashion without interrupting pilot's control over the flight.

When the Application is connected to SkyRadar receiver it gains an access to a wealth of information supplied by FAA and it is being offered to the pilot without monthly subscription. This includes weather, database of airports and airspaces, terrain information and much more.

Below is a representative feature list which comes with SkyRadar Application.



### **Pre-Flight Planning Assistance:**

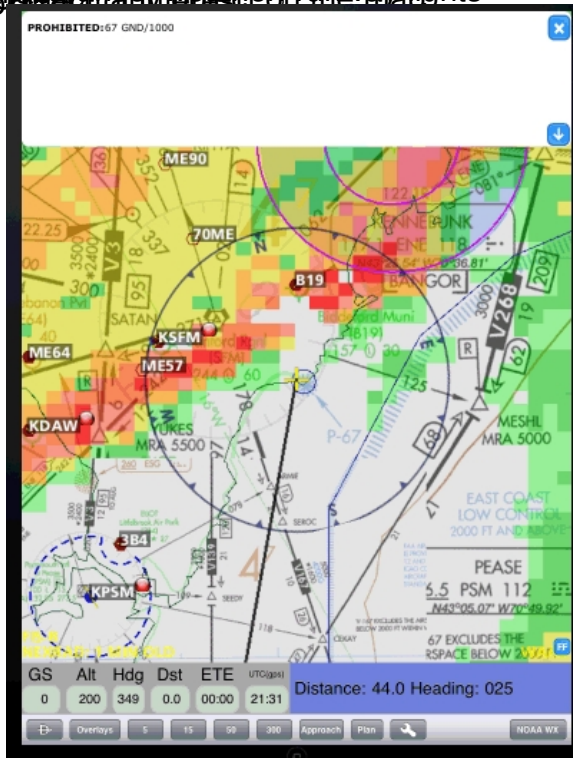
- One tap "destination" setup
- Easy to use flight planner Just enter waypoints or victor airways along your planned route
- Rearrange waypoints by dragging them in the flight plan list
- Easy map inspection along the flight route
- Save and recall saved flight plans
  
- A complete database of airports and intersections (stored locally on your device)
- Airport database updated every 56 days
  
- Vector map of airspace: class B, C, D, warning/alert/restricted/military operating areas
- Airspace database updated every 28 days
  
- Access to NEXRAD weather data on the ground

### **In-Flight Navigation Assistance:**

- Easy to navigate GPS-based moving map with most important navigation information overlaid. SkyRadar Application software displays your GPS location, altitude and heading in real-time.
- Seamlessly joined together VFR sectional and IFR Enroute Aeronautical Charts (Lows, Highs)
- Instrument procedures (approach plates) with optional geo-referencing<sup>1</sup>.
- One tap away a complete database of airports and intersections stored locally on your device.



Downranging/alert/restricted/military operating areas  
 Overlay: Real-time flight data on premap



Real-time weather information updated every 15 seconds and terrain  
 Click on map to view detailed information can be recorded and replayed at later time  
 Geo-referenced data provided by Seattle Avionics and yearly subscription can be purchased [h](#)